

# Agenda

## Overview and Scrutiny

### Performance Board

**Tuesday, 13 September 2016, 10.00 am**  
**County Hall, Worcester**

All County Councillors are invited to attend and participate

This document can be made available in other formats (large print, audio tape, computer disk and Braille) on request from Democratic Services on telephone number 01905 728713 or by emailing [democraticservices@worcestershire.gov.uk](mailto:democraticservices@worcestershire.gov.uk)

If you can not understand the contents of this document and do not have access to anyone who can translate it for you, please contact 01905 765765 for help.

বাংলা। আপনি যদি এই দলিলের বিষয়বস্তু বুঝতে না পারেন এবং আপনার জন্য অনুবাদ করার মত পরিচিত কেউ না থাকলে, অনুগ্রহ করে সাহায্যের জন্য 01905 765765 নম্বরে যোগাযোগ করুন। (Bengali)

廣東話。如果您對本文檔內容有任何不解之處並且沒有人能夠對此問題做出解釋，請撥打 01905 765765 尋求幫助。 (Cantonese)

普通话。如果您对本文件内容有任何不解之处并且没有人能够对此问题做出解释，请拨打 01905 765765 寻求帮助。 (Mandarin)

Polski jeżeli nie rozumieją Państwo treści tego dokumentu i nie znają nikogo, kto mógłby go dla Państwa przetłumaczyć, proszę zadzwonić pod numer 01905 765765 w celu uzyskania pomocy. (Polish)

Português. Se não conseguir compreender o conteúdo deste documento e não conhecer ninguém que lho possa traduzir, contacte o 01905 765765 para obter assistência. (Portuguese)

Español. Si no comprende el contenido de este documento ni conoce a nadie que pueda traducírselo, puede solicitar ayuda llamando al teléfono 01905 765765. (Spanish)

Türkçe. Bu dokümanın içeriğini anlayamazsanız veya dokümanı sizin için tercüme edebileceğiniz birisine ulaşamıyorsanız, lütfen yardım için 01905 765765 numaralı telefonu arayınız. (Turkish)

اردو۔ اگر آپ اس دستاویز کی مشمولات کو سمجھنے سے قاصر ہیں اور کسی ایسے شخص تک آپ کی رسائی نہیں ہے جو آپ کے لئے اس کا ترجمہ کرسکے تو، براہ کرم مدد کے لئے 01905 765765 پر رابطہ کریں۔ (Urdu)

(Kurdish) کوردی سۆزانی. ننگێر ناتوانی تێبگی له ناوچێ زکی نهم بپلگهی و دهستت به هیچ کس نایگات که وهیگیژر نێوه بۆت، تکلیه تملظۆن بکه یۆ ژماره 01905 765765 و داوای رینۆینی بکه (Kurdish)

ਪੰਜਾਬੀ। ਜੇ ਤੁਸੀਂ ਇਸ ਦਸਤਾਵੇਜ਼ ਦਾ ਸਮਝਨ ਸਮਝ ਨਹੀਂ ਸਕਦੇ ਅਤੇ ਕਿਸੇ ਅਜਿਹੇ ਵਿਅਕਤੀ ਤੱਕ ਪਹੁੰਚ ਨਹੀਂ ਹੈ, ਜੋ ਇਸਦਾ ਤੁਹਾਡੇ ਲਈ ਅਨੁਵਾਦ ਕਰ ਸਕੇ, ਤਾਂ ਕਿਰਪਾ ਕਰਕੇ ਮਦਦ ਲਈ 01905 765765 'ਤੇ ਫ਼ੋਨ ਕਰੋ। (Punjabi)

# DISCLOSING INTERESTS

There are now 2 types of interests:  
**'Disclosable pecuniary interests'** and **'other disclosable interests'**

## WHAT IS A 'DISCLOSABLE PECUNIARY INTEREST' (DPI)?

- Any **employment**, office, trade or vocation carried on for profit or gain
- **Sponsorship** by a 3<sup>rd</sup> party of your member or election expenses
- Any **contract** for goods, services or works between the Council and you, a firm where you are a partner/director, or company in which you hold shares
- Interests in **land** in Worcestershire (including licence to occupy for a month or longer)
- **Shares** etc (with either a total nominal value above £25,000 or 1% of the total issued share capital) in companies with a place of business or land in Worcestershire.

**NB Your DPIs include the interests of your spouse/partner as well as you**

## WHAT MUST I DO WITH A DPI?

- **Register** it within 28 days and
- **Declare** it where you have a DPI in a matter at a particular meeting
  - you must **not participate** and you **must withdraw**.

**NB It is a criminal offence to participate in matters in which you have a DPI**

## WHAT ABOUT 'OTHER DISCLOSABLE INTERESTS'?

- No need to register them but
- You must **declare** them at a particular meeting where:  
You/your family/person or body with whom you are associated have a **pecuniary interest** in or **close connection** with the matter under discussion.

## WHAT ABOUT MEMBERSHIP OF ANOTHER AUTHORITY OR PUBLIC BODY?

You will not normally even need to declare this as an interest. The only exception is where the conflict of interest is so significant it is seen as likely to prejudice your judgement of the public interest.

## DO I HAVE TO WITHDRAW IF I HAVE A DISCLOSABLE INTEREST WHICH ISN'T A DPI?

Not normally. You must withdraw only if it:

- affects your **pecuniary interests OR** relates to a **planning or regulatory** matter
- **AND** it is seen as likely to **prejudice your judgement** of the public interest.

## DON'T FORGET

- If you have a disclosable interest at a meeting you must **disclose both its existence and nature** – 'as noted/recorded' is insufficient
- **Declarations must relate to specific business** on the agenda
  - General scattergun declarations are not needed and achieve little
- Breaches of most of the **DPI provisions** are now **criminal offences** which may be referred to the police which can on conviction by a court lead to fines up to £5,000 and disqualification up to 5 years
- Formal **dispensation** in respect of interests can be sought in appropriate cases.

## Overview and Scrutiny Performance Board Tuesday, 13 September 2016, 10.00 am, County Hall, Worcester

### Membership

#### Councillors:

Mr R M Udall (Chairman), Mrs E A Eyre (Vice Chairman), Mr A T Amos, Mr C J Bloore, Ms L R Duffy, Mr C B Taylor, Mr P A Tuthill and Mr T A L Wells

#### Co-opted Church Representatives (for education matters)

Bryan Allbut (Church of England) and Francis Mohan (Roman Catholic)

#### Parent Governor Representatives (for education matters)

Ms C Richardson ((Parent Governor)) and Vacancy (Secondary)

### Agenda

Item No	Subject	Page No
1	<b>Apologies and Welcome</b>	
2	<b>Declaration of Interest and of any Party Whip</b>	
3	<b>Public Participation</b> Members of the public wishing to take part should notify the Head of Legal and Democratic Services in writing or by e-mail indicating the nature and content of their proposed participation no later than 9.00am on the working day before the meeting (in this case 12 September). Enquiries can be made through the telephone number/e-mail address below.	
4	<b>Confirmation of the Minutes of the Previous Meeting</b> (previously circulated)	
5	<b>Annual Worcestershire County Council Community Safety Report</b>	1 - 32
6	<b>Scrutiny Proposal: Budget 2017/18</b>	33 - 38
7	<b>Member Update and Cabinet Forward Plan</b>	39 - 44

Agenda produced and published by the Head of Legal and Democratic Services, County Hall, Spetchley Road, Worcester WR5 2NP. For general enquiries: 01905 763763 Worcestershire Hub: 01905 765765  
Email: [worcestershirehub@worcestershire.gov.uk](mailto:worcestershirehub@worcestershire.gov.uk)

To obtain further information or hard copies of this agenda, please contact Alyson Grice (01905 844962)/Samantha Morris 01905 844963 email: [scrutiny@worcestershire.gov.uk](mailto:scrutiny@worcestershire.gov.uk)

All the above reports and supporting information can be accessed via the Council's website at <http://www.worcestershire.gov.uk/cms/democratic-services/minutes-and-agenda.aspx>

Date of Issue: Monday, 5 September 2016

This page is intentionally left blank

## **OVERVIEW AND SCRUTINY PERFORMANCE BOARD 13 SEPTEMBER 2016**

### **ANNUAL WORCESTERSHIRE COUNTY COUNCIL COMMUNITY SAFETY REPORT**

---

#### **Summary**

1. The Overview and Scrutiny Performance Board (OSPB) is asked to consider the Annual Update on developments in relation to Community Safety in Worcestershire.
2. The following people have been invited to attend:
  - Tracey Onslow, West Mercia Deputy Police and Crime Commissioner
  - Glyn Edwards, Head of Commissioning, West Mercia Police & Crime Commissioner's Office
  - Claire Richardson, Commissioning Officer, West Mercia Police & Crime Commissioner's Office
  - Superintendent Kevin Purcell, West Mercia Police
  - David Cookson, National Probation Service
  - Councillor Tony Miller, Police and Crime Panel Member for Worcestershire County Council (WCC)
  - Councillor John Smith, Cabinet Member with Responsibility for Health and Well Being, WCC
  - Frances Howie, Director of Public Health, WCC
  - Tim Rice, Health and Well Being Manager, WCC
  - Martin Lakeman, Domestic Abuse & Sexual Violence Co-ordinator, WCC
  - Amanda Smith, Community Services Manager, Worcester City Council
  - Sheena Ramsey, Chair of South Worcestershire Community Safety Partnership
  - Linda Collis, Vice Chair of North Worcestershire Community Safety Partnership
  - Lorraine Preece, Chief Executive Officer, YSS Ltd
  - David Cookson, National Probation Service
  - Keith Barham, West Mercia Youth Offending Service
  - Mark Preece, Area Commander, Hereford & Worcester Fire And Rescue Service
  - Susannah Stennett, EOS Community Rehabilitation Company

#### **Background:**

3. This report sets out an overview of the activities that the Council has been and is engaged in relating to its community safety function. It confirms the statutory duties of both the Local Authority and the Director of Public Health (DoPH) relating to community safety and ways in which those duties are complied with and the assurance arrangements that are in place in this regard.

4. Worcestershire County Council (WCC) as a Responsible Authority has to comply with its duty under s.17 Crime and Disorder Act 1998 (as amended), which requires each Authority to exercise its functions with due regard and to do all that it reasonably can to prevent crime and disorder, anti-social behaviour and the misuse of drugs and alcohol and other substances and reduce reoffending.
5. This is a corporate responsibility for all Directorates, although the strategic co-ordination of community safety partnership working and corporate leadership sits with the DoPH in the new Directorate of Public Health (PH).
6. Section 30 of the Health and Social Care Act 2012, gives the DoPH, responsibility for amongst other matters, their Local Authority's role in co-operating with the police, the probation service and the prison service to assess the risks posed by violent or sexual offenders. They should also work with local criminal justice partners and Police and Crime Commissioners (PCC) to promote safer communities.
7. WCC fulfils its s.17 duty in a number of ways across Directorates, through commissioning and operational activity and ensuring that policies reflect the duty.
8. A diagram showing the bodies engaged in community safety in Worcestershire and the links between partners is attached as appendix 1.
9. Set out below is an overview of some of the community safety related activities that have and are continuing to take place within WCC and with our key partnerships.
10. This is underpinned by a significant amount of strategic and partnership work, as well as carrying out operational functions that support the duty. The governance structures in place in Worcestershire and West Mercia are designed to operate as assurance systems for the work of WCC and the partnerships. These working arrangements have recently been refreshed through work by PH officers, but are kept under review in terms of efficiency and effectiveness.
11. The report outlines some of the key activities that WCC supports, with some outcomes from 2015/16, some current actions in 2016/17 and where relevant, some headline examples of crime information.

**12. Worcestershire Safer Communities Board (SCB) and North and South Worcestershire Community Safety Partnerships (CSPs):**

In two-tier Local Authority areas such as Worcestershire, there is a requirement for a strategic oversight on County wide community safety issues and this is provided through the SCB. The SCB has membership from all of the Responsible Authorities and some additional key partners such as the voluntary sector. The Board carries out this **strategic function** and also oversees a number of sub-groups, charged with leading on a Worcestershire wide response to priority community safety issues. The SCB is co-ordinated and led by PH and the DoPH is the Chair.

It is important to recognise that CSPs are a statutory requirement at District Council level and their remit is to focus upon the analysis of local community safety issues and support strategic and specific operational approaches to help make local communities safer. They produce and deliver against annual action plans that are backed up by a strategic assessment. They receive funding from the West Mercia Police and Crime Commissioner (PCC) to support their work. PH officers represent the Council on both CSPs and fully engage and support delivery of their plans. This is a significant contribution by WCC to meeting its s.17 duty.

**2015/16 Outcomes**

- Annual reports received from the chairs/lead officers from the Forum against Domestic Abuse, the Integrated Offender Management Strategy Group, Substance Misuse Oversight group and Prevent Strategy Group on their activities and outcomes.
- Production of the annual Community Safety Agreement 2015/16.
- Monitoring of the annual CSA action plan.
- Commencement of joint business meetings between the chairs of the SCB, the Children's and Adults Safeguarding Board and the Health and Wellbeing Board.
- Commissioning and completion of an external peer review of the governance and operation of partnership working arrangements across Worcestershire and reporting back to the SCB with a series of recommendations.

**2016/17 current activity**

- Work continuing on the Peer Review outcomes with Community Safety Partnerships (CSPs) considering specific recommendations.
- Community Safety Agreement to be completed after the Police and Crime Commissioners plans are published.
- SCB to become a signatory to a joint working protocol which is currently in place between the two Safeguarding Boards and the Health and Wellbeing Board.
- Finalising the Worcestershire Community Safety Information Sharing Protocol between statutory agencies.

**Crime Data/monitoring:** Information is provided as required in relation to specific reports from SCB sub groups. New standardised PCC scorecards will be utilised to monitor crime trends. Appendices 2 and 3 provide examples of the scorecards for the north and south Worcestershire CSP areas. These will increasingly become strategic working documents for all partners and specifically used by CSP analysts to consider crime data at tasking meetings.

**13. West Mercia PCC and West Mercia Police and Crime Panel (PCP):**

**PCC:** WCC works closely with the PCC and his office and in particular continue to develop areas where the Council can co-commission and develop joint working approaches, current examples being the financial support for substance misuse, domestic abuse commissioning and Child Sexual Exploitation (CSE). Council officers

support work with the PCC through the West Mercia Crime Reduction Board and regular contact and exchanges. The new PCC, John Campion, is currently consulting on his new Police and Crime Plan and WCC will respond accordingly.

**PCP:** The Council is responsible for the administration and support of the Panel and this is managed by officers from Legal and Democratic and Public Health team. It meets quarterly and sub groups are set up for reviewing the PCC's proposed annual precept and on an ad hoc basis for specific pieces of work.

**2015/16**

- Senior officer attendance and support at the West Mercia Criminal Justice Board and close co-operation with the PCC and the delivery of the Police and Crime Plan
- Work with the OPCC and CSPs to develop and introduce new West Mercia PPC Scorecards to standardise crime data and analysis across all CSP areas.
- Support for the PCP sub group scrutiny of the PCC budget and precept proposals.

**2016/17**

- PH analysts are working with counterparts in the Police and CSPs to improve data quality and share best practise.
- WCC responding to the PCC's consultation on the new Plan.
- Best practise training for Councillors in their PCP role has been organised and provided, including preparing for confirmatory hearings of the Chief Constable, the Deputy PCC and finance officer
- Officers are working with a Members sub group on the advertising, shortlisting and interviewing of independent PCP members.
- Officers are preparing an annual work plan which is to be agreed by the PCP and assists in its role of supporting, scrutinising and holding the PCC to account.

**Crime data/monitoring:** PCC scorecards to be modified and finalised to include the new PCC priorities.

**14. Reducing reoffending:**

The duty to support the reduction of reoffending primarily sits with the CSPs. Worcestershire IOM Strategy group oversees the Partnership work in this area and receives funding from the PCC to support activities to reduce offending and re-offending across the county. The group has received £40,700 to support activity and interventions around the 7 Pathways to Reducing Reoffending and £20,000 has been allocated to the two "One Day One Conversation" (ODOC) groups (£10,000 each area). The focus of the work is through the ODOC multi-agency meeting that considers individual offenders and tactical responses to reduce their risk of reoffending. This area of business is primarily led by the Police, probation agencies and the CSPs.

**2015/16**

**2016/17**



<ul style="list-style-type: none"> <li>• Work completed against IOM annual work plan</li> </ul>	<ul style="list-style-type: none"> <li>• Officers supporting the updating of the IOM reducing reoffending strategy and action plan when the PCC Plan is launched.</li> <li>• Officers are working with the IOM team to develop approaches to working with Domestic Abuse Serial Perpetrators.</li> </ul>
<p><b>Crime data/monitoring:</b> A range of data is produced to monitor the IOM cohorts which is in turn reported to the OPCC. Work is underway with analysts to extend the level of data and analysis at a West Mercia wide level.</p>	

<p><b>15. Harm Reduction</b></p>	
<p><b>Safeguarding:</b> Safeguarding is everyone's business and is well embedded in the practise and operation of the Council and is key in reducing crime, the risk of crime and protecting vulnerable adults and children. There is a strong systems cross over between safeguarding and community safety work in relation to vulnerable adults and children and young people, particularly in relation to reducing reoffending, reducing the risks relating to domestic abuse and sexual and the wider prevention approaches to keeping Worcestershire a safer place to live.</p>	
<p>2015/16</p> <ul style="list-style-type: none"> <li>• Strategic meetings have been established between the chairs of the two safeguarding Boards, the Health and Wellbeing Board and SCB to foster closer working arrangements and to ensure that business plans and activities are more effectively aligned.</li> <li>• Establishment of the new Multi-agency Safeguarding Hub arrangements (Family Front Door) where WCC officers work side by side with the police and other agencies to manage safeguarding concerns.</li> </ul>	<p>2016/17</p> <ul style="list-style-type: none"> <li>• A specific multi-agency triage system comprised of WCC, Health, Police, Probation, Women's Aid staff is now in place to in the Family Front Door consider all domestic abuse referrals at source and be able to instantly exchange data and information at that point and make decision making significantly more efficient and effective.</li> <li>• An agreement has been reached to utilise the Family Front Door for all Prevent related referrals for children and the procedures will shortly be launched internally.</li> <li>• Adult referrals to be triaged by Safeguarding officers.</li> </ul>
<p><b>Crime Data/Monitoring:</b> Data is provided in detail to the two Safeguarding Boards to monitor. An example of the impact of the new DA triage approach is from June 2016, where there</p>	

were 1136 domestic abuse incidents presented at multi agency triage. The contact and referral team only accepted 80 referrals and out of these, 52 were opened to Children's social care for assessment, giving the right response to children who are in need of protection and support. The remaining cases were appropriately signposted for other specialist or universal services.

**Hate Crime:**

Hate crime is not recorded as a specific crime type, but a marker is applied to offences. to enable analysis. It is primarily led by the CSPs through their Hate Incident Partnerships (HIP)

2015/16

- WCC officers contribute to Hate Incident Partnership meetings.

2016/17

- Support for the Police campaign on Hate Crime week commencing 8 October 2016. Supporting Fortis Living's event "Pride and Prejudice" event.
- Agreement has been reached with the CSPs that we will look to merge the two HIPs to create a Worcestershire wide partnership.
- PH officers liaising with the Police on the Commonly Recognised Information Picture (CRIP) used to inform their understanding of community tensions to see how this could be utilised by the HIPs.

**Crime Data/Monitoring:**

- In North Worcestershire Hate Crimes increased by 58% in in the two year period between 2013/14 and 2015/16 and in South Worcestershire, Hate Crimes increased by 103%.
- Race related hate crime accounted for 36.7% and 39 % respectively of reported incidents in 2015/16.

Post Brexit there has been an increase in reported Hate Crime, specifically Racial/Religious Hate Crime. Hate Crimes are reviewed on a daily basis and it is apparent that the volume of reports is now increasing too. Local Authorities and CSPs are working locally to try and reduce community tensions and are closely monitoring the situation

**Prevent and radicalisation:** The new duties placed on Local Authorities under the counter terrorism legislation have required the Council to review its previous approach to Prevent. This is an area of significant officer activity to ensure WCC complies with the new prevent duties.

A PH officer chairs the statutory Channel Panel which is a multi-agency group that considers voluntary referrals of children, young people and adults where there are

specific Prevent related safeguarding concerns about radicalisation or extremism.

A Worcestershire Prevent Strategy group has been re-constituted by WCC to ensure that Prevent is being effectively embedded across the area. The Group which is chaired by the Health and Wellbeing manager consists of the "Specified Authorities", to whom the Prevent duty applies. The Group will collectively reassure itself and other key agencies such as the SCB and the two Safeguarding Boards that the Specified Authorities are doing what they collectively need to do meet the Prevent duties. A short action plan is being finalised to that end and it will also incorporate some of the recommendations from the annual Police Special Branch Counter Terrorism Profile (CTLP) for Worcestershire, which is a restricted document.

There are a number of Prevent duties, the most significant being to ensure that the WCC workforce is fully aware of the Prevent duty and how to apply it where required. Other duties include a requirement that new WCC commissioned contractors ensure that their staff are appropriately briefed on Prevent and that other WCC policies such as the booking and use of WCC public buildings take account of Prevent to ensure they are not used for purposes of radicalisation and extremism.

The CTLP concludes that Worcestershire is considered to be a safe and low risk area in relation to risks of terror attacks but all parties must be vigilant and have polices and processes in place to ensure that risk is mitigated.

2015/16

- Rollout of Prevent awareness raising for education and adult learning front line staff and school governors, in line with Ofsted requirements.
- Reports to the Adults and Children's Safeguarding Board on progress implementing the Prevent duty
- WCC chairing and administration of the Channel Panel meetings.
- New WCC contract requirements are now compliant with the Prevent duty requirement for contractors to include the Prevent duty into their own roles as necessary.

2016/17

- WCC Senior Leadership Team is fully briefed on the Prevent duties and the agreed the establishment of an officer task and finish group to steer this work.
- Update reports on the Prevent duty to the Adults and the Childrens' Safeguarding Boards.
- Staff awareness raising events on radicalisation and extremism are being provided for WCC staff via the Home Office Workshop to Raise Awareness of Prevent (WRAP) briefings and Prevent eLearning packages.
- The Council is finalising its arrangements to receive Prevent referrals and make onward referrals to the Channel Panel where there are concerns about radicalisation or extremist views.
- Setting up of triage arrangements via the family Front Door and Adult Safeguarding team for referrals.
- Arrangements are to be made for the

	<p>Police and our PH officers to brief WCC Members on Prevent and the Channel arrangements.</p> <ul style="list-style-type: none"> <li>• Prevent briefing to take place with the Worcestershire Voices Board to assist the voluntary sectors response to prevent and dealing with any Channel referrals.</li> </ul>
--	---

**16. Domestic abuse:**

The Worcestershire Forum against Domestic Abuse and Sexual Violence has continued to work towards the prevention and reduction of both domestic abuse and sexual violence in all its forms.

2015/16

- In November 2015, Worcestershire as a county was awarded National White Ribbon Status, in recognition for our collective work in tackling and raising awareness of both domestic abuse and sexual violence.
- Completion of three Domestic Homicide Reviews with the reports published on the respective community safety websites CSPs. PH officers lead and co-ordinate these detailed reviews on behalf of the CSPs.
- DA Forum newsletters published.
- Multi Agency Risk Assessment Conference (MARAC) development events delivered to staff across Worcestershire.

2016/17

- August 2016 saw the re-introduction of the Specialist Domestic Violence courts (SDVC) into Worcestershire.
- Conference for Magistrates around domestic abuse, a collaborative day between the courts, Forum, Police, District Judge, Witness Service, Women's Aid and survivors
- Multi Agency Risk Assessment Conference (MARAC) arrangements are currently subject to a review.
- Three further DHR cases have been referred.
- Planning is underway with partners for the 16 days of action against DA in November/December 2016.
- In September 2016 the DA co-ordinator is organising a training event "Safeguarding Children, Preventing Homicide" for Family Front Door teams.
- A conference for Adult Social Care entitled "Safeguarding Victims, Preventing Homicide" is being arranged on the 2nd December. The event is a result of emerging issues that have been identified from Worcestershire Domestic Homicide Reviews and to raise awareness across the workforce.
- Work is under way to refresh the

	<p>current Domestic Abuse and Sexual Violence strategy and plan and it will be developed in partnership with the Safeguarding Boards and Health and Wellbeing Board.</p> <ul style="list-style-type: none"> <li>• The Forum has collaborated with the Children's Safeguarding Board on developing Healthy and Respectful relationships agenda, and a new toolkit for schools of recommended materials for young people is being made available.</li> <li>• Regular DA Forum Newsletter produced which sets out the activities and issues relating to DA, August edition attached (Appendix 4)</li> <li>• The DA service is being recommissioned with a new service due to be in place by November 2016.</li> </ul>
--	--

**Crime data/monitoring:**

There has been a 72% increase in the recording of domestic abuse across Worcestershire. The increases in reported crimes are mirrored in increased calls to the specialist helplines in Worcestershire. In respect of the domestic abuse helpline this is a 154% increase.

In MARAC 502 high risk cases have been discussed in 2015-16, a 56% increase on the previous year. These included 20.5% who were repeat victims and included 613 children in families. Repeat victims in Worcestershire are lower than the national average (25%). Work with the Adult Safeguarding Board has revealed that there have been 541 safeguarding concerns in the last 12 months with a domestic abuse indicator and 77% of these are with people over 50 years.

**17. Sexual Violence/Child Sexual Exploitation (CSE):**

NHS England, along with other partners, is the lead commissioner of health services for victims of sexual violence and rape, with Sexual Assault Referral Centres (SARCs) in England, being where the health care and therapeutic pathways and wider Sexual Assault services are provided. The national commissioning guidance states that "the provision of these services will be reliant on the development of effective co-commissioning relationships between NHS England, Public Health England, the Police, Police and Crime Commissioners (PCCs), clinical commissioning groups (CCGs) and local authorities." The requirement placed on NHSE is to ensure robust care pathways for victims and appropriate referral at a time of crisis; including psycho-social intervention that may be required at the time of presentation, and ongoing therapeutic support.

The SARC, based in Bransford Worcestershire, is the main centre in West Mercia and it currently operates under contract to G4S. 211 Worcestershire residents used the SARC service in the last year. Most were assaulted by an acquaintance with rape being the prevalent offence.

Currently NHSE is working with key partners on the recommissioning of the SARC, with the paediatric SARC arrangements already having been recently commissioned. There are ongoing discussions relating to the responsibilities of other agencies to jointly commission and support elements of the service pathway and NHSE are holding a major event in this regard in September 2016 which PH will attend.

Support for victims and survivors of sexual violence and rape is also provided by the voluntary sector and notably WRASAC in Worcestershire, who provide a range of services including Independent Sexual Violence Advisors (ISVA) and a pilot Family ISVA programmes. WRASAC operate across Herefordshire and Worcestershire and their Independent Sexual Violence Advisors (ISVAs) are funded primarily by PCC grants.

The Children's Safeguarding Board has a CSE strategy and comprehensive action plan designed to take an overarching approach to tackling CSE. Significant progress has been made in meeting the CSE action plan outcomes. WCC is at the forefront of leading this work and the SCB and CSPs have actions in support of those objectives. The Family Front Door has developed a triage system whereby daily multi agency meetings assess CSE and missing young people cases and significant improvements in the service and communications with young people have taken place

**2015/16**

- CSE Action plans require SCB/CSPs to support specific activities.
- CSPs and District Councils joined the CSE Panel and are supporting local actions to target any CSE hotspots.

**2016/17**

- PH analysts are currently finalising a JSNA briefing on sexual violence which will be published shortly.
- The sexual health commissioned service is required to closely co-operate with the SARC service.
- Support for the Police campaign on "Stop Rape Now" in September and December 2016.

**Crime data/Monitoring:**

- In 2015 rape and other sexual offences accounted for 3% of all recorded crime across North Worcestershire and for 3.6% of all recorded crime across South Worcestershire.
- Rape offences increased by 142% in North Worcestershire, 206% in South Worcestershire, and 168% in total for the County from 2010/11 to 2015/16.
- The number of other sexual offences increased by 54% in North Worcestershire, 135% in South Worcestershire, and 90% in total for the County, from 2010/11 to 2015/16.
- Part of this increase can be attributed to changes in reporting and the impact of historical cases now being reported. On average there is a 40%/60% split between rape offences that are current (recorded within 28 days of being committed) and

those classified as non recent. For other sexual offences this proportion is 50%/50%.

- In North Worcestershire 5% of other sexual offences in 2015 had a cyber-crime marker, compared to 3% in South Worcestershire.
- In 2015 25% of sexual offences and rape in both North and South Worcestershire involved children aged 13 and under.

### **18. Drugs and alcohol:**

There is currently an OSPB scrutiny exercise underway entitled 'Effectiveness of the Prevention and Recovery Drug and Alcohol Misuse Service', which commenced following an Adult Care and Wellbeing O&S Panel on 16 March 2016, to consider the drug treatment service commissioned by WCC.

Relating to community safety, the Council's commissioned service provider Swanswell has made significant improvements in positively supporting criminal justice outcomes and works very closely with the Police and probation services in relation to arrest, people in custody, treatment orders and requirements, working in prison and supporting the wider operational and strategic meetings as necessary.

Significant challenges lay ahead regarding the use of Novel Psychoactive Substances (NPS) and the impact of new legislation on NPS will be monitored closely.

2015/16

- Health Chats feature a range of information about drug misuse, including signposting information to the local support services.
- Officer support for key partnerships - West Mercia Police Drug Strategy Alliance Group,

2016/17

- Development of a Memorandum of Understanding to improve the experience of service users who are subject to co-existing substance misuse and mental ill-health (commonly termed dual diagnosis).
- Public Health have developed a Twitter account and a Facebook page to provide information on drugs e.g. information on NPS targeted at festival goers.
- Support for the West Mercia Police campaign around NPS in November 2016.
- Development of Public Health processes as a formal consultee relating to licencing applications is under way, with a focus upon the impact of crime and disorder.
- Public Health is working in partnership with Worcester Business Improvement District and licensees in Worcester City to support responsible licensing schemes such as Best Bar

	None and Purple Flag.
<b>Crime data/ Monitoring:</b> Under consideration in the current OSPB scrutiny exercise.	

**19. Funding and commissioning:**

Set out below are the headline PH costs in relation to community safety related activity.

PH community safety related expenditure 2016/17 (rounded)

Staffing (3 posts)	£103,000pa ( projected)
Alcohol and Substance misuse contract:	£4,020,000pa. plus £106,000 funded by West Mercia Police and Crime Commissioner
Domestic Abuse contract:	£462,000pa under the current contract. £ 417,000pa from November 2016 ( not including the IDVA contract)

**Conclusion:**

20. WCC continues to meet its own duties relating to community safety as far as it reasonably can and makes a significant contribution across Worcestershire and West Mercia through its leadership role and its commissioned services.

21. The new Directorate of Public Health and the DoPH will continue to ensure that systems assurance and rigour is embedded in the Council's responsibilities for community safety.

**Purpose of the Meeting**

22. The OSPB is asked to consider:

- (a) The content of the Annual Community Safety report;
- (b) Whether it wishes to make an comments to the Cabinet Member, WCC officers or partner agencies; and
- (c) Whether there are any issues which should be the subject of future scrutiny work.

**Supporting Information**

- Appendix 1: Diagram showing the bodies engaged in community safety in Worcestershire and the links between partners
- Appendix 2: Total Recorded Crime 2015/16: North Worcestershire
- Appendix 3: Total Recorded Crime 2015/16: South Worcestershire
- Appendix 4: Worcestershire Forum Against Sexual Abuse and Domestic Violence Forum Newsletter August 2016

**Contact Points**

County Council Contact Points



County Council: 01905 763763  
Worcestershire Hub: 01905 765765  
Email: [worcestershirehub@worcestershire.gov.uk](mailto:worcestershirehub@worcestershire.gov.uk)

Specific Contact Points for this report

Tim Rice. Health and Wellbeing Manager (Public Health Team) (01905) 843107  
Email: [trice@worcestershire.gov.uk](mailto:trice@worcestershire.gov.uk).

**Background Papers**

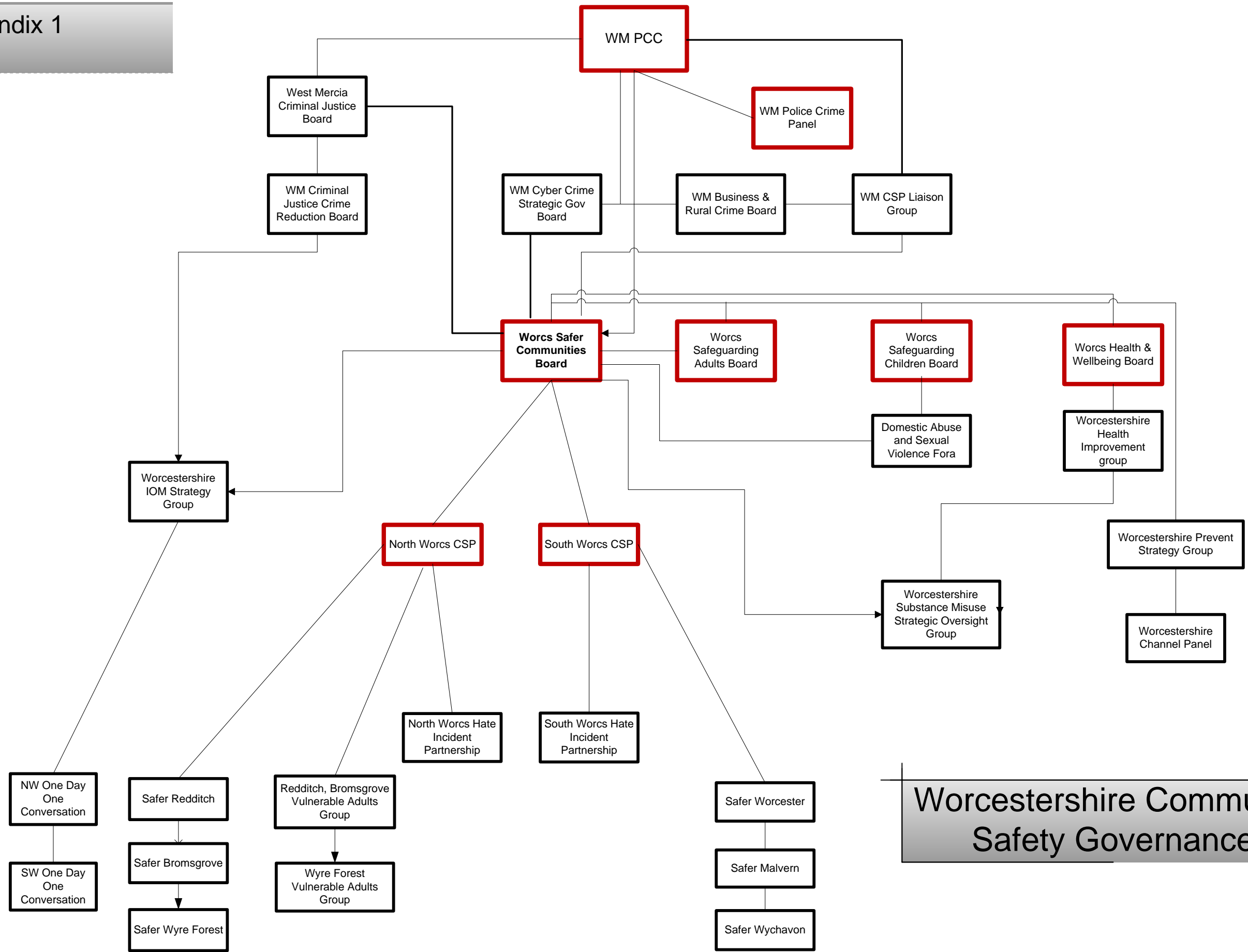
In the opinion of the proper officer (in this case the Head of Legal and Democratic Services) the following are the background papers relating to the subject matter of this report:

Agenda and Minutes of the Overview and Scrutiny Performance Board 7 July 2015

which are available on the Council's website at:

<http://www.worcestershire.gov.uk/cms/democratic-services/minutes-and-agendas.aspx>

This page is intentionally left blank



Worcestershire Community Safety Governance

This page is intentionally left blank

**Proposed Outcome:** Reduce levels of crime and the impact of crime for the benefit of the community.

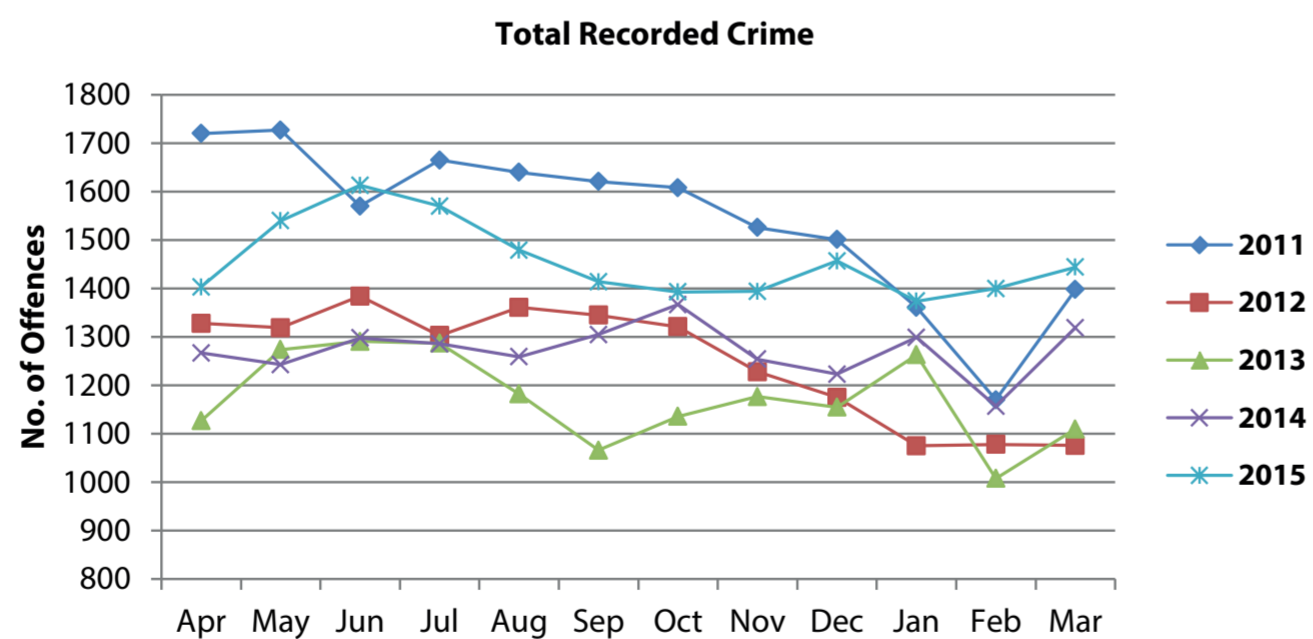
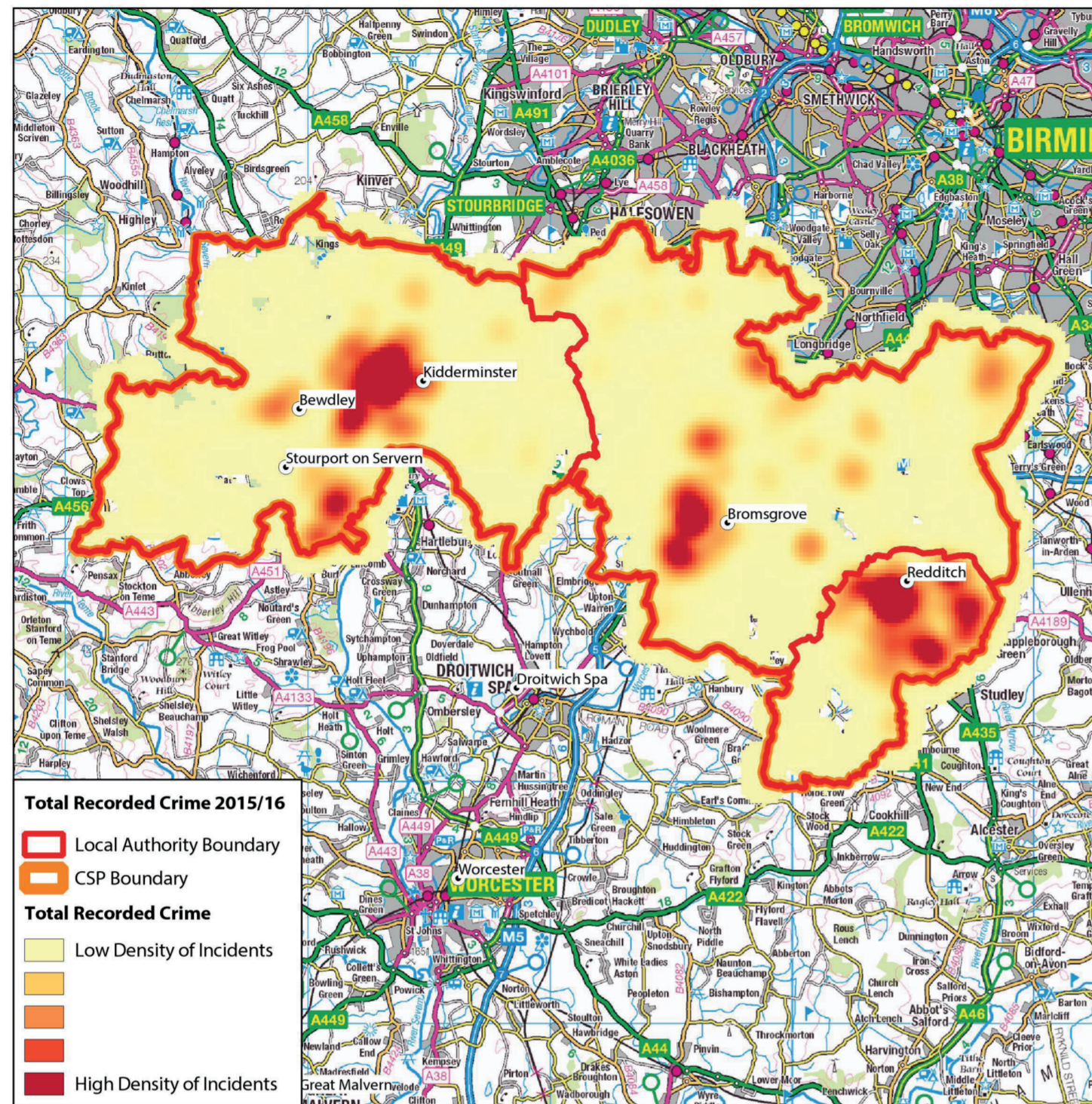
**Police & Crime Plan :** To understand crime and the cause of crime.

**Alliance Control Strategy Priorities:**

- Strategic Policing Requirement
- Terrorism
- Serious and Organised Crime
- Cyber Crime
- Threats to Public Order
- Civil Emergencies
- Child Sexual Exploitation
- Alliance Priorities
- Cyber Crime
- Child Sexual Exploitation
- Organised Crime Groups
- Rape and Sexual Assault
- Domestic Abuse
- Killed and Seriously Injured RTC's
- Alliance Intelligence Requirement
- Modern Slavery and Human Trafficking
- Female Genital Mutilation
- Serious Acquisitive Crime
- Violent Crime
- Pipeline Incursions

**Key Indicators:**

- Total Recorded Crime
- Key Markers
- Geographical Profiles
- Harm Caused
- CSP Identified Priorities



	TRC	Trend
2011/12	18,507	→
2012/13	14,993	↓
2013/14	14,076	↓
2014/15	15,277	↑
2015/16	17,481	↑
2016/17	1,278	↓

**Data Sources**

- West Mercia Police Performance Unit Crime by Line 2010 - 2015
- West Mercia Police Performance Unit Dashboard

**Story behind the baseline**

- Total recorded crime was reduced by 17% in the period between 2011/12 and 2013/14.
- However, there has been a 14% increase in TRC between 2014/15 and 2015/16.
- Changes to ethical reporting will have had a level of impact on total recorded crime.
- Assault (with or without injury) makes up 29% of the total recorded crime in North Worcestershire (2015/16) and has seen a 54% year on year increase.

**Implications**

- Fear of and perception of crime can impact on social cohesion and communities.
- Home Office Research found total cost of crime against individuals and households was £36,166 million in 2003/04<sup>1</sup>.
- Increase in reported crime coming at a time of reduced resources.
- Community / decision makers not understanding impact of reporting changes on crime levels.

<sup>1</sup> The Economic and Social Costs of Crime Against Individuals and Households 2003/04

**Partners**

- Police and Crime Commissioner
- West Mercia Police
- Safer Bromsgrove
- Safer Wyre Forest
- Safer Redditch
- Clinical Commissioning Group
- Hereford and Worcester Fire and Rescue Service
- Warwickshire and West Mercia Community Rehabilitation Company
- National Probation Service
- West Mercia Youth Offending Service

**Example Projects / Services**

- Community Ambassadors
- CCTV
- Home Security Scheme

**Identified Risks**

- Cuts will reduce the Council's ability to drive the Community Safety Partnership.
- Potential reduction in Local Authority funding.
- Impact of changing and growing population.
- Delays whilst waiting for Worcestershire and West Mercia approaches to be agreed / decided.
- Two tier authority a challenge – what is the role of Worcestershire if they don't have the money.

**Gap Analysis**

- Community consultation to address fears and perceptions of crime.
- Meaningful evaluation of the impact in changes in reporting.
- Intelligence and analysis to further understand causes of changes to crime profile.

**Police and Crime Plan Outcomes**

- To reduce the volume of violent crime with an emphasis of addressing the harm caused by alcohol through partnership working.
- To reduce the volume of anti-social behaviour incidents.
- To reduce re-offending and bring offenders to account.
- To develop and implement a business crime strategy.
- To work in partnership to protect the most vulnerable people in our society.
- To deliver a supportive and effective response to victims and witnesses.
- To work with the Safer Roads Partnership to reduce the number of casualties on our roads.
- To meet the requirements of the Strategic Policing Requirement.
- To reduce the harm caused by drugs with a focus on treatment, and targeting those that cause the most harm.

**Outcome Star/s:**

- Community Star;
- Drug and Alcohol Star;
- Empowerment Star;
- Family Star, Family Star (Early Years) and Family Star Plus;

This page is intentionally left blank

**Proposed Outcome:** Reduce levels of crime and the impact of crime for the benefit of the community.

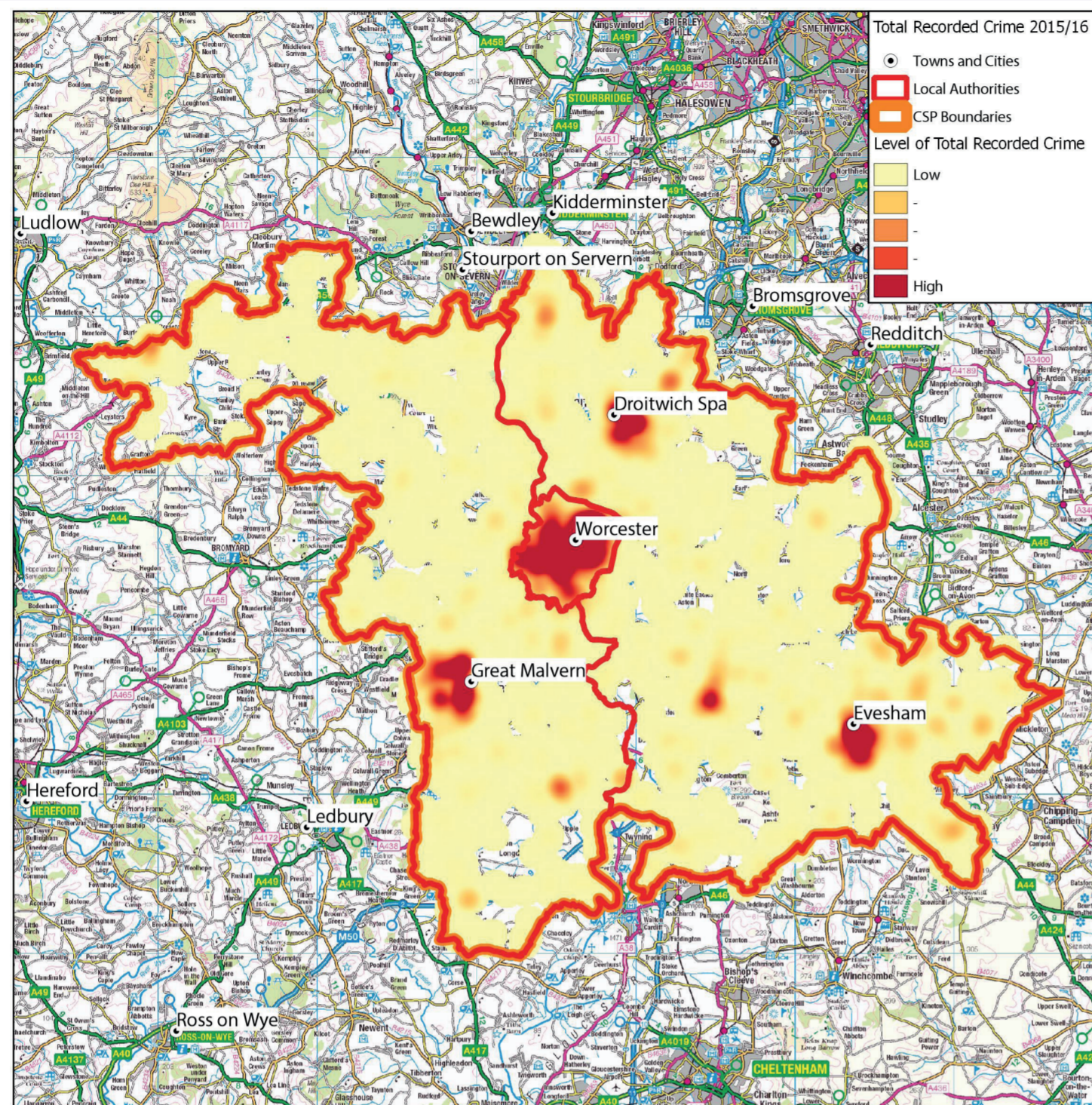
**Police & Crime Plan :** To understand crime and the cause of crime.

**Alliance Control Strategy Priorities:**

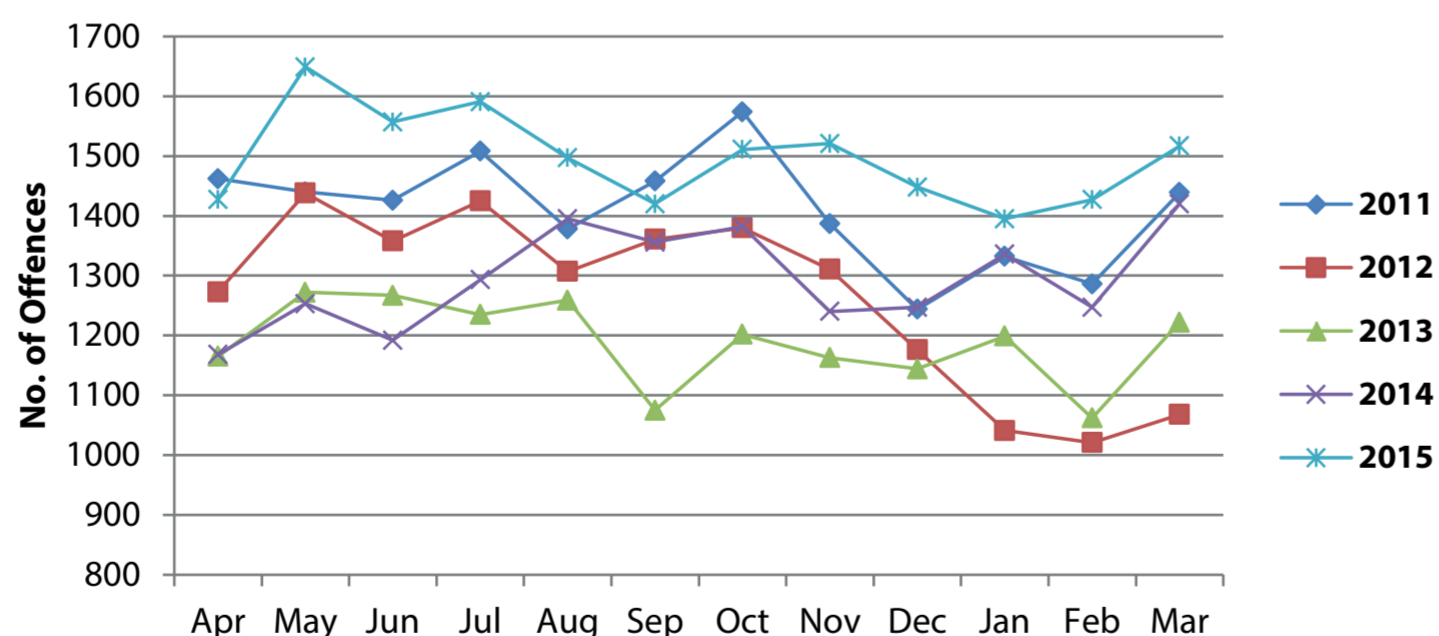
- Strategic Policing Requirement
- Terrorism
- Serious and Organised Crime
- Cyber Crime
- Threats to Public Order
- Civil Emergencies
- Child Sexual Exploitation
- Alliance Priorities
- Cyber Crime
- Child Sexual Exploitation
- Organised Crime Groups
- Rape and Sexual Assault
- Domestic Abuse
- Killed and Seriously Injured RTC's
- Alliance Intelligence Requirement
- Modern Slavery and Human Trafficking
- Female Genital Mutilation
- Serious Acquisitive Crime
- Violent Crime
- Pipeline Incursions

**Key Indicators:**

- Total Recorded Crime
- Key Markers
- Geographical Profiles
- Harm Caused
- CSP Identified Priorities



Total Recorded Crime



	TRC	Trend
2011/12	16,934	↓
2012/13	15,159	↓
2013/14	14,265	↓
2014/15	15,529	↑
2015/16	17,960	↑
2016/17	1,373	→

**Data Sources**

- West Mercia Police Performance Unit Crime by Line 2010 - 2015
- West Mercia Police Performance Unit Dashboard

**Story behind the baseline**

- Total recorded crime was reduced by 8% in the period between 2010/11 to 2014/15.
- However, there has been a 15% increase in TRC between 2014/15 and 2015/16.
- Changes to ethical reporting will have had a level of impact on total recorded crime.
- The top five increasing crimes in terms of percentage of change, equate to 1% of the total crime rate.
- Assault (with or without injury) makes up 31% of the total recorded crime in South Worcestershire (2015/16) and has seen a 60% year on year increase.

**Implications**

- Fear of and perception of crime can impact on social cohesion and communities.
- Home Office Research found total cost of crime against individuals and households was £36,166 million in 2003/04<sup>1</sup>.
- Increase in reported crime coming at a time of reduced resources.
- Community / decision makers not understanding impact of reporting changes on crime levels.

<sup>1</sup> The Economic and Social Costs of Crime Against Individuals and Households 2003/04

**Partners**

- Police and Crime Commissioner
- West Mercia Police
- Wychavon CSP
- Malvern Hills CSP
- Worcester City CSP
- Clinical Commissioning Group
- Hereford and Worcester Fire and Rescue Service
- Warwickshire and West Mercia Community Rehabilitation Company
- National Probation Service
- West Mercia Youth Offending Service

**Example Projects / Services**

- Door Knocking
- Detached Team
- Community Wardens

**Identified Risks**

- Cuts will reduce the Council's ability to drive the Community Safety Partnership.
- Potential reduction in Local Authority funding resulting from Comprehensive spending review.
- Impact of changing and growing population.
- Challenge of working a two tier authority.
- Risk to "tasking funds" and resulting flexibility of approach.

**Gap Analysis**

- Programmes to respond to increase in assault, outside of domestic abuse.
- Community consultation to address fears and perceptions of crime.
- Meaningful evaluation of the impact in changes in reporting.
- Intelligence and analysis to further understand causes of changes to crime profile.

**Police and Crime Plan Outcomes**

- To reduce the volume of violent crime with an emphasis of addressing the harm caused by alcohol through partnership working.
- To reduce the volume of anti-social behaviour incidents.
- To reduce re-offending and bring offenders to account.
- To develop and implement a business crime strategy.
- To work in partnership to protect the most vulnerable people in our society.
- To deliver a supportive and effective response to victims and witnesses.
- To work with the Safer Roads Partnership to reduce the number of casualties on our roads.
- To meet the requirements of the Strategic Policing Requirement.
- To reduce the harm caused by drugs with a focus on treatment, and targeting those that cause the most harm.

**Outcome Star/s:**

- Community Star;
- Drug and Alcohol Star;
- Empowerment Star;
- Family Star, Family Star (Early Years) and Family Star Plus;

This page is intentionally left blank



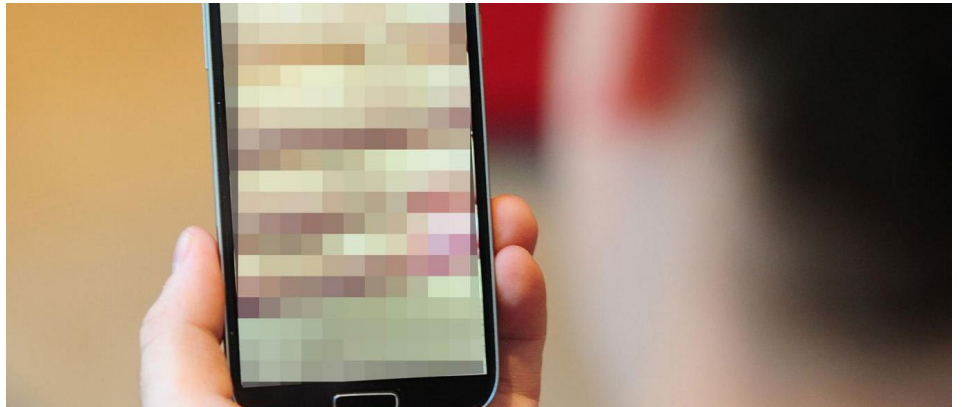


# FORUM NEWS

August 2016

## EDITORS COLUMN

Welcome to the August edition of the Forum News on behalf of the Worcestershire Forum Against Domestic Abuse and Sexual Violence. I hope you find this edition to be informative with a focus around technology with how mobile phones are fuelling abuse, a parental guide on the phenomenon that is Pokémon GO and the how the iPhone is tracking your every move. It celebrates success with awards for both young people and Worcestershire Woman of the Year. Older abuse is profiled as an emerging theme and ongoing challenge. Sadly, we learn that Stonham Homegroup will not be providing domestic abuse services after the 1st December 2016 when the new commissioned services will move to a new provider (not determined at this time). On behalf of everyone I thank them for their support and service over many years. We also welcome John Campion as the new Police Crime Commissioner.  
Martin Lakeman



## Revenge Porn - Update

'Revenge Porn' is the sharing of private, often sexual or explicit, photos or videos of another person without their consent and with the purpose of causing embarrassment or distress. It can have devastating consequences for victims and have a severe impact on their mental health and well-being. Sometimes the images are also accompanied by personal information about the victim, such as their full name, address and links to their social media profiles.

Revenge porn was made a specific offence in England and Wales in April 2015 as part of the Criminal Justice and Courts Act 2015, and those convicted will face a maximum sentence of 2 years in prison. New figures show that between April and October 2015 nearly 200 cases of revenge porn were reported to police, by victims as young as 12. However, with figures drawn from just over a third of police forces in England and Wales, this is likely to only be the tip of the iceberg, with actual incidents much higher. As part of wider government measures to tackle revenge porn, in February 2015 the Ministry of Justice launched the 'Aware B4 You Share' campaign to raise awareness of the new legislation surrounding revenge porn, in order to deter potential perpetrators and support victims by signposting sources of advice. The Government also launched a helpline to provide victims with information on legal help and their rights to have the images removed from websites – which received 1800 calls in its first six months alone.



WORCESTERSHIRE FORUM  
AGAINST DOMESTIC ABUSE  
& SEXUAL VIOLENCE

Stronger Together

Page 21

0800 980 3331

[worcestershiredomesticandsexualabuse.co.uk](http://worcestershiredomesticandsexualabuse.co.uk)



## How technology is fuelling Britain's hidden domestic abuse epidemic

A third of young women in the UK have been victims of 'coercive control' but most do not know it's a crime and have experienced a form of domestic abuse that could be on the rise with the spread of mobile technology. Research by Women's Aid found that almost 40 per cent of 16 to 24-year-olds interviewed said they had been subjected to **"controlling behaviour"**, mainly including having their phone, messages, emails and social media accounts checked. But only a tiny fraction of those recognised the behaviour as a type of **"coercive control"**, which is now illegal under a law passed last year.

Polly Neate, the charity's CEO, said that many girls and young women are abused in their first relationships, when they have nothing to compare it to. **"Domestic abuse is so much more than just physical abuse, and in our experience coercive control underpins the vast majority of all abusive relationships."**

The Serious Crime Act 2015 made **"controlling or coercive behaviour in an intimate or family relationship"** illegal and punishable with up to five years in prison and hefty fines. But many of the people interviewed were not aware of the recent law and considered some of the behaviour it encompasses normal. One in 20 think that being scared of your partner was part of a **"normal relationship"**, the research found, while 10 per cent thought having their phone repeatedly checked was acceptable and only one in three knew what coercive control was. But only a tiny fraction of those recognised the behaviour as a type of **"coercive control"**, which is now illegal under a law passed last year. Some blamed the abuse on themselves for not making their boyfriend or husband trust them and others took it as a sign they **"care"**.



**WORCESTERSHIRE FORUM  
AGAINST DOMESTIC ABUSE  
& SEXUAL VIOLENCE**

*Stronger Together*

**0800 980 3331**

[worcestershiredomesticandsexualabuse.co.uk](http://worcestershiredomesticandsexualabuse.co.uk)



The rise of mobile technology is making methods of control ever easier and more varied, from instant messaging services showing when communications have been read, to popular apps that track a person's whereabouts. "While over a third of those questioned consider themselves as having been in controlling relationships, 37 per cent only knew this in hindsight and 10 per cent when it was highlighted to them by their friends and family."

A survivor said "I think it's often the case that young people don't have the experience of healthy relationships to know that what's happening isn't normal. It's so easy just to think 'all couples argue', especially when someone is telling you that you provoked them all the time. And once they start wearing down your self-esteem and isolating you, it spirals to a point that you can't see a way out. Having experienced coercive control I know it's very easy not to recognise those early signs of abuse, and end up staying in a relationship that's dangerous and takes over every aspect of your life. Raising awareness with young people is so important because it'll empower them to recognise signs of control early on and know what they are experiencing isn't normal or their fault."

## How your iPhone has been tracking your every move in secret!

I previously featured this in June last year but have been shocked at how few professionals are aware of this feature so feel the need to share it again. Please share this new found knowledge with others and remember that it may pose a risk to people you're supporting. Described as "the divorce lawyer's dream" - this iPhone feature that has existed for months, buried deep into the settings menu. I am more concerned how this feature can be used to increase the risk posed to victims. If you put this information in someone else's hands, then it becomes powerful, and in some cases, dangerous.

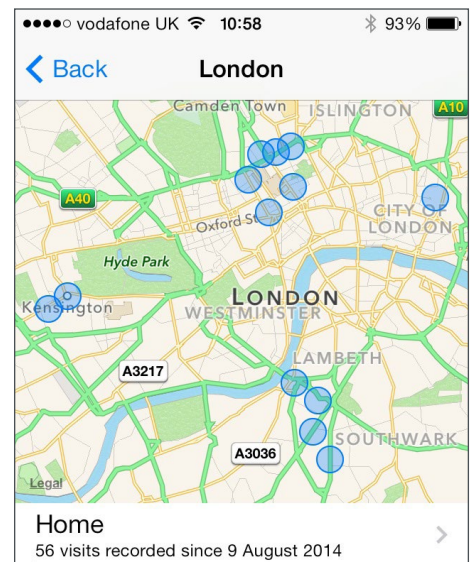
Without your knowledge, every move you make is being tracked in alarming detail. The Frequent Locations system pinpoints the places you go on a map, how many times you're paid a visit, and the exact times of your arrival and departure.

If you haven't disabled this feature, this means that Apple knows where you live and work and is even able to understand your daily routine. That includes an abusive partner too. Few people know this exists – after being shown the information, I was stunned and it almost felt I was like I was a "person of interest" in a low budget film about the FBI. Thankfully, I'm not that interesting!

Go to Settings section, and hit the Privacy tab. Then click Location Services at the top, which will probably say "on". From here scroll right to the bottom of the menu and click System Service: Finally, press Frequent Locations, which is the last option available.

At the bottom, you'll see your history, including the locations and how many visits made. By clicking on one of them for more information, you might be presented with several addresses. Selecting a specific location will lead you to a list of the dates and times you were there – scary.

Thankfully, there are ways to disable this, in the Frequent Locations menu it's possible to clear your history, and stop your iPhone from logging these details in the future.



19:07 - 01:00	04/09/2014 - 05/09/2014
17:13 - 20:05	03/09/2014
22:37 - 23:16	29/08/2014
17:12 - 20:27	27/08/2014
17:31 - 20:09	24/08/2014





## Look out for cruelty to people, vets told as study finds high risk of domestic abuse in a fifth of households with mistreated pets

- Research by Devon and Cornwall Police and social services departments
- They found link between pets suffering cruelty and domestic abuse risk
- Vets encouraged to tip off police if they fear child or adult is being abused

**Vets are being urged to look for signs that those people asking them to treat their injured pets might be the victims of domestic abuse. The new initiative follows research by Devon and Cornwall Police and social services departments suggesting that in a fifth of households where pets suffer cruelty, there is also a high risk of domestic abuse. Leaflets will soon appear in surgeries across the UK encouraging vets to tip off police if they fear a child or vulnerable adult is being abused. The campaign is backed by the crime-fighting charity Crimestoppers. A lot of domestic abusers will use an animal to help control their victim, saying they will hurt it if the victim does not comply. They might also hurt the animal and say that the victim will be the one to be hurt next.**

The advice has been compiled by the British Veterinary Association's charitable arm, The Animal Welfare Foundation, and The Links Group, which promotes the welfare of animals, children and adults at risk of abuse. Vet Freda Scott-Park urged her colleagues to be alert to the possibility that a person abusing a pet might also be abusing a person in their household. Vets should consider encouraging potential victims to open up by asking them questions such as: 'Sometimes when I see injuries like this, it means the animal has been hurt by someone they live with. Is this possible?' A spokesman for the RSPCA said: 'Any campaign which urges vets to look out for non-accidental injuries has to be welcomed, and if that helps create awareness of wider possible domestic violence in the home, then we are pleased to lend our support.'



**WORCESTERSHIRE FORUM  
AGAINST DOMESTIC ABUSE  
& SEXUAL VIOLENCE**

*Stronger Together*

Page 24

**0800 980 3331**

[worcestershiredomesticandsexualabuse.co.uk](http://worcestershiredomesticandsexualabuse.co.uk)



## Domestic Abuse champion wins Wonderful Worcestershire Woman of the Year

Quality Solicitors Parkinson Wright Solicitor Suzanne Oldnall, Head of the Domestic Team won both the Employee of the Year at the Wonderful Worcestershire Women Awards held on Friday 29th April 2016 and the overall award of Wonderful Worcestershire Woman. Suzanne was instrumental in setting up a designated domestic abuse unit at their Worcester office where sufferers of abuse can seek legal help and support. This frequently involves Suzanne obtaining emergency injunctions from Court on the same day, to protect victims of domestic abuse. Suzanne continues to raise awareness that help is available and has assisted many victims in an around Worcestershire to lead a life without fear. Cyril Arridge, Managing Partner says, "We nominated Suzanne for this award as she is passionate about her work and committed to helping sufferers of domestic abuse. We are delighted that she won not just the Employee of the Year award but was also the overall winner of Wonderful Worcestershire Women. These are awards that she fully deserves for all of her work in helping sufferers of domestic abuse".

Suzanne adds, "I am extremely proud to have won these awards which has helped to raise awareness of domestic abuse and I encourage other victims of abuse to come forward and seek help."



## ContinU trust Young People Award

Young people from schools comprising The ContinU Trust of Wyre Forest & Hagley were presented with the White Ribbon Award by Martin Lakeman, Strategic Co-ordinator of the Worcestershire Forums Against Domestic Abuse, in recognition of the work they have done to raise awareness of domestic abuse and sexual violence in their schools in recent years. The presentation took place at Kidderminster Town Hall as part of the annual Wyre Forest & Hagley Young Citizenship Celebration event evening.

**Karma Nirvana extends Helpline hours**

Supporting victims of honour

crimes and forced marriages. The helpline is available for all victims, survivors, friends and professionals.

New opening times will be:

- 9am to 9pm Mon - Fri
- 10am to 4pm Sat & Sun

**0800 5999 247**

Together we can increase reporting, reduce isolation, save lives.



**WORCESTERSHIRE FORUM  
AGAINST DOMESTIC ABUSE  
& SEXUAL VIOLENCE**

Stronger Together

**0800 980 3331**  
worcestershiredomesticandsexualabuse.co.uk



## Health and Well-being

### New Woman Manual

Customers in the private, public and not-for-profit sectors have all long demanded a title for women to go with our popular Man Manual. This booklet is the result. Woman was written by a top female health journalist with a female-led editorial and advisory panel.

Women of all ages and from all over the UK have been involved in its development and road-testing. We hope you find it useful.

#### What's inside?

Women can still expect to live longer than men – but the gap is closing. It's no coincidence that more and more women are now juggling jobs and family responsibilities – and while we care for others, we don't always take as much care of ourselves as we might.

But the good news is that making small changes to the way we live our lives can lead to some big improvements to our health – both now and in the future.

This booklet will help you get started:

- How To Eat Well Without Dieting
- How To Get Off The Sofa – And Have Fun

- How To Spot Cancer
- How To Get Enough Sleep
- How To Boost Body Image And Self-Esteem

For copies of the Woman- Woman's Health made easy manual, follow the link below:

<http://bit.ly/2a1K8ud>

### Men's Health - Beat Stress Manual

The 36 page full colour booklet looks at:

- The causes of stress
- How it affects us and
- What we can do about it.

Written by Fabio Zucchelli, Richard Shrubbs and Steve Baxter with cartoons by John Byrne, a team that have all experienced mental health problems of their own, is full of simple, practical tips that will make any man feel better.

To obtain copies of these stress manuals, visit the Men's Health Forum website, follow the link below:

<http://bit.ly/2abECow>



**WORCESTERSHIRE FORUM  
AGAINST DOMESTIC ABUSE  
& SEXUAL VIOLENCE**

*Stronger Together*



**Visual Evidence for Victims**

## Visual Evidence For Victims in West Mercia

### What is Visual Evidence for Victims (VEV)?

Visual Evidence for Victims (VEV) in West Mercia (Worcestershire) is designed to take approved photographs of injuries or things that have been damaged. The project can also store photographs securely so that they will be available if you decide to report the crime later on. It is ideal for supporting victims of both domestic and sexual abuse who are not ready to go the police.

VEV is run by Victim Support with the help of other local organisations and is totally independent of the police.

The VEV team has evidenced approved cameras that they have been trained to use. They can take photographic evidence of:

- Physical injuries, such as bruises, cuts, scratches or pulled-out hair.
- Property damage, including broken windows, damaged doors or offensive graffiti.

### What happens to the photographs?

VEV can store these photographs securely and confidentially until you decide to take action. Pictures can be used to report a crime to the Police or in civil proceedings.

Alternatively, we can keep your photo evidence on file (for up to six years) or you can choose to have the photographs destroyed. You can get support and information from us to help you decide what you want to do. You, the victim choose when you want to use the images and they can support and corroborate other reported incidents.

The VEV team will not force you to have your evidence recorded through pictures – we will only do it with your agreement.

We will treat you with dignity and understanding. We will be sensitive, especially if you have intimate injuries. We won't tell anyone else that we have your photographs.

### VEV Trained Organisations In Worcestershire:

- Victim Support
- Women's Aid
- The Sexual Assault Referral Centre (SARC)
- West Mercia Rape and Sexual Abuse Support Centre (WMRSASC)
- Homegroup
- Worcester Community Safety Team
- Bromsgrove District Housing Trust
- Maggs Day Centre

For more information on the service or training opportunities contact Chris Hodson at Victim Support on:

**01905 726885**



**WORCESTERSHIRE FORUM  
AGAINST DOMESTIC ABUSE  
& SEXUAL VIOLENCE**

*Stronger Together*

**0800 980 3331**

[worcestershiredomesticandsexualabuse.co.uk](http://worcestershiredomesticandsexualabuse.co.uk)



Stonham  
**home  
group**



## Stonham Domestic Abuse Services - End of service statement

**Stonham has delivered Domestic Abuse Services in Worcestershire for many years, supporting thousands of women, children and men in refuges, safe houses and in the community.**

Stonham is now entering into a new strategy for 2016-2020 and with this, we have recently taken the decision to focus our efforts on specialising in providing support to a smaller number of client groups. Our strategy review has resulted in the decision not to continue providing domestic abuse services in Worcestershire in the future as these services no longer align with our new strategy.

We remain committed to delivering domestic abuse support until our current contracts come to an end. We ask that you continue to refer clients to the Worcestershire Domestic Abuse Service as the service itself is not closing, it will simply move to a new provider from 1st December 2016. We receive additional funding to support women, children and men needing safe accommodation, therefore we will continue to provide a small number of safe houses in Worcestershire until October 2017.

We are very proud of the close working relationships we have had with our commissioners, partners and stakeholders. As we will still have a presence in Worcestershire, due to continuing to deliver and develop support and accommodation services to other client groups, we look forward to continuing to work with many of you in the future.

I'd like to take this opportunity to thank everyone who has supported our service over the years. It has been a great pleasure to work with such passionate and committed professionals and we wish you all continued success in the delivery of support to those affected by domestic abuse.

**Zoe Jenkins**

**Business Contracts Manager**



**WORCESTERSHIRE FORUM  
AGAINST DOMESTIC ABUSE  
& SEXUAL VIOLENCE**

*Stronger Together*

Page 28

**0800 980 3331**

[worcestershiredomesticandsexualabuse.co.uk](http://worcestershiredomesticandsexualabuse.co.uk)





**West Mercia  
Rape & Sexual Abuse  
Support Centre**



# SELFIE



## Sexualisation Exploitation Love Friendships Information Empowerment

SELFIE is an educational resource designed to increase young people's access to high quality sexual violence prevention and support. There is significant evidence of increasing prevalence of sexual and other violence in young people's relationships, as well as high levels of childhood and adult sexual violence and abuse.

The use of social media and mobile technology in sexual harassment and bullying is also well documented. These forms of violence also reflect the increasing sexualisation of children and young people including the availability of pornography, and the subsequent influence on young people's perceptions of appropriate sexual behaviour.

SELFIE enables young people to explore these issues and develop their knowledge and understanding, including considering how the Sexual Offences Act 2003 relates to sexual conduct and issues such as consent.

SELFIE has been developed by West Mercia Rape and Sexual Abuse Support Centre on behalf of Rape Crisis England and Wales and in partnership with Rape Crisis Scotland.

WMRSASC have been delivering the programme over the past 18 months within a wide variety of educational settings. In total over 900 children across West Mercia have had an input from SELFIE, whether it has been a one off session or completing a full programme.

As part of the ongoing development of SELFIE, we are now looking at:

- Continuing the delivery of SELFIE across West Mercia to a minimum of 800 pupils aged 11-18 years old.
- Development of additional modules aimed at those within hard to reach groups, additional needs and specific communities, for example LGBT and Not in Education, Employment or Training (NEET).
- Development of additional resources for those identified as at risk of offending.
- Development of SELFIE Plus. A new resource aimed at adults for delivery to parents, teachers and community groups.

SELFIE has achieved some significant outcomes on educating and changing the attitudes and raising awareness of children and young people around sexual violence, with 100% of children stating they would recommend the specialist services of WMRSASC.

For more information or to book a SELFIE project please contact:

Jemma Price  
Children's Independent Sexual Violence Advisor Service Manager  
T: **01905 611655** | E: [jemma.price@wmrsasc.org.uk](mailto:jemma.price@wmrsasc.org.uk)



**WORCESTERSHIRE FORUM  
AGAINST DOMESTIC ABUSE  
& SEXUAL VIOLENCE**

*Stronger Together*

Page 29

**0800 980 3331**

[worcestershiredomesticandsexualabuse.co.uk](http://worcestershiredomesticandsexualabuse.co.uk)



## Spotlight on Older abuse

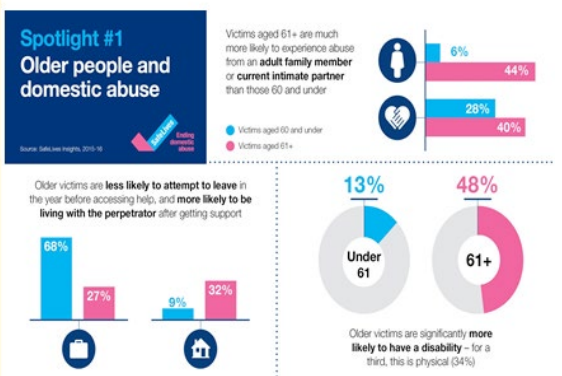
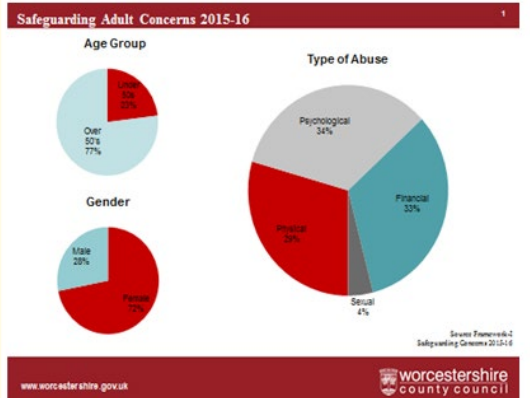
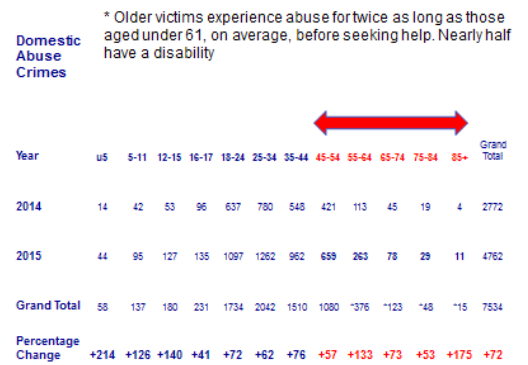
It's our right to be safe at any age. How can we make it easier for older victims to get help?

Safelives are doing a "spotlight" on abuse suffered by older people. This theme mirrors what we've found in Worcestershire, with increased recording by West Mercia Police of older victims and increases in safeguarding concerns, particularly adults over fifty. To find out more you can visit the Safelives site at [www.safelives.org.uk](http://www.safelives.org.uk)

Here are some of the challenges faced by older victims:

- Older victims might not recognise what's happening as abuse
- They may be reluctant to talk about it
- They don't know about the help available or have been let down in the past
- They may have health or mobility needs
- Family and friends aren't always supportive
- They think it's too late

This challenge is replicated in the Worcestershire Helpline figures which have seen 154% increase in calls however only 11% of calls to the helpline being from people over 50 years of age and only 2% of calls from people over 60. Clearly we need to do more to raise the awareness of older people suffering abuse.



**WORCESTERSHIRE FORUM AGAINST DOMESTIC ABUSE & SEXUAL VIOLENCE**

Stronger Together

**0800 980 3331**  
[worcestershiredomesticandsexualabuse.co.uk](http://worcestershiredomesticandsexualabuse.co.uk)



## The phenomenon that is Pokémon GO – A Parent's Guide

We explain what the game can do, the benefits and risks, and how parents can help their children play the game safely. Posted on the Childnet blog 2nd August 2016 Update. [Click Here](#) for more information.

## Childnet - Online Safety Tools



Updated information for parents about Smart TVs and safety tools for social networking sites.

[www.childnet.com/blog/safety-tools-on-online-services-update-](http://www.childnet.com/blog/safety-tools-on-online-services-update-)

## Broken Rainbow Helpline taken over by Galop

THE UK'S ONLY NATIONAL LESBIAN, GAY, BISEXUAL AND TRANS DOMESTIC ABUSE HELPLINE

galop .ORG.UK

@galopuk

end abuse

NEED SUPPORT? WE'RE HERE FOR YOU!  
Domestic abuse can be psychological, financial, sexual, physical and/or emotional.

PHONE: 0300 999 5428 or 0800 999 5428\*  
EMAIL: help@galop.org.uk

\*Call the number (free) for you. 0300 numbers are billed as 01 and 02 landline numbers and are usually included in mobile phone package minutes. 0800 numbers are free from landlines and included in some mobile provider inclusive minutes.



WORCESTERSHIRE FORUM  
AGAINST DOMESTIC ABUSE  
& SEXUAL VIOLENCE

Stronger Together Page 31

0800 980 3331  
worcestershiredomesticandsexualabuse.co.uk



## In the spotlight

**Name:**

John Champion

**Organisation:**

West Mercia

**Position:**

Police & Crime Commissioner

**My first proper job was...**

Mucking out wild animals at the Safari Park

**When I was a child I wanted to be...**

Chef

**Favourite book / film...**

The Italian Job (original)

**Favourite drink...**

Harvey Wall banger

**The best piece of advice I was given was...**

Make the most of every bit of luck that presents its self

**If I could invite any four people to dinner, they would be...**

Margaret Thatcher, Albert Einstein, Harvey Milk and Barak Obama

**After work I like to...**

Bake cake !

**If I was invisible for a day I would...**

Sit and watch the world go by uninterrupted



## Forthcoming Events

**19th October** – Conference at Hindlip for Magistrates – “Criminal Justice, Projecting Victims, Reducing Homicide”

**23rd November** – MARAC Awareness Event – SOLD OUT

**2nd December** – Adult Social Care Conference (County Hall) – “Safeguarding Victims, Reducing Homicide”

## Domestic Abuse Professionals pack / Make a Pledge

Don't forget if you want to download the domestic abuse information pack then go to the Forum website at [www.worcestershiredomesticandsexualabuse.co.uk](http://www.worcestershiredomesticandsexualabuse.co.uk). It's on the home page together with the MARAC referral form. You can also make your pledge of support by clicking on the Worcestershire White Ribbon logo or go to [www.whiteribboncampaign.co.uk/worcestershire](http://www.whiteribboncampaign.co.uk/worcestershire) your pledge is really important.



**WORCESTERSHIRE FORUM  
AGAINST DOMESTIC ABUSE  
& SEXUAL VIOLENCE**

*Stronger Together*

Page 32

**0800 980 3331**  
[worcestershiredomesticandsexualabuse.co.uk](http://www.worcestershiredomesticandsexualabuse.co.uk)

## **OVERVIEW AND SCRUTINY PERFORMANCE BOARD 13 SEPTEMBER 2016**

### **SCRUTINY PROPOSAL: BUDGET 2017/18**

---

#### **Summary**

1. The Overview and Scrutiny Performance Board (OSPB) is asked to consider the following proposal for scrutiny of the 2017/18 budget.

#### **Background**

2. It is proposed that a scrutiny task group, led by Councillor Richard Udall, be set up as part of scrutiny of the 2017/18 budget.

3. Overview and Scrutiny Panels and Health Overview and Scrutiny Committee (HOSC) will be asked to hold discussions with Cabinet Members, service users and staff on the 2017/18 budget proposals at their meetings in November 2016. This will be followed by the Chairman and Vice-Chairman of OSPB leading a cross party group of members who will aim to provide in-depth challenge to the Panel Chairmen on their findings.

4. The Scrutiny Task Group's final report will be considered by OSPB in January 2017.

#### **Terms of Reference**

5. The suggested Terms of Reference are:

- To examine how the Council is planning to meet funding reductions whilst delivering its Corporate Priorities.
- To consider whether the proposed budget is achievable and realistic, and meets residents' needs in the medium term.
- To consider the level of risk associated with the budget changes.
- To understand the impact on residents of the budget proposals and how they are being managed and mitigated.

6. A Scrutiny Proposal is attached at Appendix 1, setting out suggestions for evidence gathering and a possible timetable.

#### **Issues Suitable for Scrutiny**

7. The OSPB agreed to use a set of criteria (listed below) to help determine its scrutiny programme. A topic does not need to meet all of these criteria in order to be scrutinised, but they are intended as a guide for prioritisation.

- Is the issue a priority area for the Council?

- Is it a key issue for local people?
- Will it be practicable to implement the outcomes of the scrutiny?
- Are improvements for local people likely?
- Does it examine a poor performing service?
- Will it result in improvements to the way the Council operates?
- Is it related to new Government guidance or legislation?

8. Other points which need to be taken into account when considering whether to review a particular issue are:

- is the subject specific? – to ensure that task groups understand exactly what they are scrutinising; and
- is it achievable within a realistic timescale?

## Next Steps

9. Taking into account the issues raised in the paragraphs above, Members are asked to consider, comment and agree the scrutiny proposal for the Budget 2017/18 Scrutiny Task Group led by Cllr Richard Udall

## Supporting Information

- Appendix 1 - Budget 2017/18 – Scrutiny Task Group

## Contact Points

### County Council Contact Points

County Council: 01905 763763

Worcestershire Hub: 01905 765765

Email: [worcestershirehub@worcestershire.gov.uk](mailto:worcestershirehub@worcestershire.gov.uk)

### Specific Contact Points for this report

Alyson Grice/Samantha Morris, Overview and Scrutiny Officers, Commercial and Change Directorate

Tel: 01905 844962/844963

Email: [scrutiny@worcestershire.gov.uk](mailto:scrutiny@worcestershire.gov.uk)

## Background Papers

In the opinion of the proper officer (in this case the Head of Legal and Democratic Services) the following are the background papers relating to the subject matter of this report:

Agenda and Minutes of the Overview and Scrutiny Performance Board on 7 July 2015, all of which are available on the Council's website at

<http://www.worcestershire.gov.uk/cms/democratic-services/minutes-and-agendas.aspx>

# Scrutiny Proposal

<b>Topic: Budget 2017/18 – Scrutiny Task Group</b>			
<b>Background to the issue</b> (what is it and why is it being considered for scrutiny)	<p>As in 2014 and 2015 a scrutiny task group will be set up as part of scrutiny of the 2017-18 budget.</p> <p>Overview and Scrutiny Panels and HOSC will hold discussions with Cabinet Members, service users and staff on budget proposals. This will be followed by the Chairman and Vice-Chairman of OSPB leading a cross party group of members who will aim to provide a more in-depth challenge to the Panel Chairmen on their findings.</p>		
<b>Terms of reference</b>	<ul style="list-style-type: none"> <li>To examine how the Council is planning to meet funding reductions whilst delivering its Corporate Priorities.</li> <li>To consider whether the proposed budget is achievable and realistic, and meets residents' needs in the medium term.</li> <li>To consider the level of risk associated with the budget changes.</li> <li>To understand the impact on residents of the budget proposals and how they are being managed and mitigated.</li> </ul>		
Scrutiny Officer & Scrutiny Liaison Officer	Samantha Morris/Alyson Grice Mark Sanders		
<b>Suitability for scrutiny.</b> Which of the following criteria does it meet?			
<i>Is the issue a priority area for the Council?</i>	Yes	<i>Does it examine a poorly performing service?</i>	maybe
<i>Is it a key issue for local people?</i>	Yes	<i>Has it been prompted by new Government guidance or legislation?</i>	No
<i>Will the scrutiny have a clear impact on services?</i>	Yes	<i>Will it result in improvements to the way the Council operates?</i>	Yes
<i>Are improvements for local people likely as a result?</i>	Yes		
<b>Scope of scrutiny</b> (what issues will it cover and what won't it cover)	<ul style="list-style-type: none"> <li>What is the budget setting process</li> <li>How much of the budget is fixed – what do we have discretion over?</li> <li>What choices have been made? What choices were available?</li> <li>Are Directorates effected equally?</li> </ul>		

	<ul style="list-style-type: none"> <li>• How are priorities determined?</li> <li>• Does the budget overall support the Council's priorities?</li> <li>• What is the anticipated impact of budget pressures on: <ul style="list-style-type: none"> <li>• services</li> <li>• performance</li> <li>• residents/service users</li> <li>• partnerships and joint working</li> <li>• staffing levels</li> </ul> </li> <li>• What is the anticipated impact of efficiencies on the budget and how is the council planning ahead to deal with the cumulative effects of savings?</li> <li>• What "invest to save" proposals are there?</li> <li>• What consideration has been given to maximising income?</li> </ul> <p><i>N.B. O&amp;S has committed to ensure that the following are considered in all scrutiny reviews as appropriate</i></p> <ul style="list-style-type: none"> <li>• <i>equality and diversity issues</i></li> <li>• <i>commissioning</i></li> <li>• <i>localism</i></li> </ul>
Advantages to conducting scrutiny & Indicators of success (ie how will you know a good scrutiny has been done?)	A holistic view of the budget and plans for the medium term is taken and there is some appreciation of its impact, and cumulative impact, on residents.
Has anyone else examined the issue?	
Any disadvantages or pitfalls to conducting this scrutiny?	
<b>INFORMATION NEEDS</b>	
Key Documents, Reports & Data required	<ul style="list-style-type: none"> <li>• Cabinet report 13 October 2015</li> <li>• FutureFit proposals</li> <li>• Summary of FutureFit proposals</li> <li>• Supporting papers for FutureFit proposals as necessary</li> <li>• Written evidence from public/stakeholders</li> </ul>
Is an expert adviser needed?	
Possible interviewees	<ul style="list-style-type: none"> <li>• Leader &amp; Chief Executive</li> <li>• Scrutiny Panel Chairmen</li> <li>• Stakeholders (incl attending the Council's budget consultation meetings/roadshows)</li> <li>• Unison</li> <li>• Sandy Bannister – Equalities and Diversity Manager</li> </ul>



	<ul style="list-style-type: none"> <li>• Partner organisations?</li> <li>• Service providers?</li> </ul>
Is this an issue that young people would be interested in? If so, ask Youth Cabinet for evidence.	
Site Visits	
Types of meeting/ consultation needed? (eg workshops/ focus groups/ public meetings/ questionnaires etc)	
Any meetings to be held outside of County Hall?	
Media & publicity needs?	Press release to request written evidence
<b>OUTLINE TIMETABLE</b>	
Proposal to OSPB	September 2016
Evidence Gathering	October - January
Scrutiny Report to OSPB	January 2017
Scrutiny Report to Cabinet	February 2017

This page is intentionally left blank

## **OVERVIEW AND SCRUTINY PERFORMANCE BOARD 13 SEPTEMBER 2016**

### **MEMBER UPDATE AND CABINET FORWARD PLAN**

---

#### **Summary**

1. The Overview and Scrutiny Performance Board (OSPB) is asked to:
  - (a) Receive an update on emerging issues and developments within the particular remit of each member of the OSPB, including an update on each Overview and Scrutiny Panel and Task Group;
  - (b) Consider the Council's latest Forward Plan in order to identify:
    - any items it would wish to consider further at a future meeting; and
    - any items it would wish to refer to the relevant Overview and Scrutiny Panel for further consideration.

#### **Member Updates**

2. In order to ensure that Members of the OSPB are fully informed about issues relating to scrutiny in Worcestershire, communication between Members is essential. To assist in this, it has been agreed that an item will be placed periodically on the OSPB agenda to enable each member to feed back on emerging issues and developments within their remit. This will also provide an opportunity to highlight possible future agenda items. Regard for the Council's statutory requirements in relation to access to information will be critical.

3. Board Members' areas of responsibility are as follows:

- Adult Care and Well-Being Overview and Scrutiny Panel – Tom Wells
- Children and Families Overview and Scrutiny Panel – Lynne Duffy
- Economy and Environment Overview and Scrutiny Panel – Paul Tuthill
- Corporate and Communities Overview and Scrutiny Panel – Kit Taylor
- Health Overview and Scrutiny Committee (HOSC) – Alan Amos
- Crime and Disorder – Chris Bloore
- Quality Assurance – Liz Eyre

4. As part of their role, it was agreed by the Strategic Leadership Team (SLT) that scrutiny lead members should receive regular briefings from the Directorates they are shadowing. These briefings, alongside the Forward Plan (see below), can be used to help identify any emerging issues that may be appropriate for future scrutiny. Recognising that work across the County Council is of interest and value to all OSPB members, the notes from these briefings (where produced) are available to all members electronically.

5. Members may also be leading scrutiny task groups. It will be important for Members of OSPB to be aware of how each scrutiny is developing so that they can fully consider the final report.

6. Overview and Scrutiny Panel Chairmen are asked to feedback on:

- progress on the work of their Panels and any scrutiny task groups they are leading;
- key issues from the Directorate that may be appropriate for future scrutiny;
- performance information they have queries or concerns about;
- items in the Forward Plan which they consider may be possible issues to scrutinise; and
- any other issue which they feel is relevant/of interest to the OSPB.

### **Cabinet Forward Plan**

7. Part of the remit of the OSPB and the four overview and scrutiny panels is to undertake pre-decision scrutiny, in particular in relation to issues to be considered at Cabinet or by individual Cabinet Members.

8. Accordingly, on 10 September 2009 the OSPB agreed that consideration of the Council's Forward Plan should be included as a standing item on OSPB agendas.

9. The Forward Plan is now a rolling electronic document. The latest edition of the Forward Plan available was 5 September 2016 (the date of publication of this Agenda) and is attached at Appendix 1.

10. For information, the currently programmed meetings of the Cabinet are:

29 September 2016  
13 October 2016  
17 November 2016

11. The Board is asked to consider the Council's latest Forward Plan in order to identify:

- Any items that it would wish to consider further at a future meeting;
- Any items that it would wish to refer to the relevant overview and scrutiny panel for further consideration.

12. The OSPB agreed to use a set of criteria (listed below) to help determine its scrutiny programme. A topic does not need to meet all of these criteria in order to be scrutinised, but they are intended as a guide for prioritisation.

- Is the issue a priority area for the Council?
- Is it a key issue for local people?
- Will it be practicable to implement the outcomes of the scrutiny?
- Are improvements for local people likely?
- Does it examine a poor performing service?
- Will it result in improvements to the way the Council operates?
- Is it related to new Government guidance or legislation?

## **Supporting Information**

Appendix 1: Forward Plan (as at 5 September 2016)

### **Contact Points**

#### County Council Contact Points

County Council: 01905 763763

Worcestershire Hub: 01905 765765

Email: [worcestershirehub@worcestershire.gov.uk](mailto:worcestershirehub@worcestershire.gov.uk)

#### Specific Contact Points for this report

Alyson Grice/Samantha Morris, Overview and Scrutiny Officers,  
Commercial and Change Directorate (01905 844962/844963)

Email: [scrutiny@worcestershire.gov.uk](mailto:scrutiny@worcestershire.gov.uk)

### **Background Papers**

In the opinion of the proper officer (in this case the Head of Legal and Democratic Services) the following are the background papers relating to the subject matter of this report:

Agenda and Minutes of the Overview and Scrutiny Performance Board, 10 September 2009, 27 June 2013, 17 July 2013, 25 September 2013 and 23 September 2015.

[All agendas and minutes are available on the Council's website here.](#)

This page is intentionally left blank

## FORWARD PLAN

### FORMAL NOTICE OF KEY DECISIONS TO BE TAKEN BY, AND PRIVATE MEETINGS OF, CABINET (OR OTHER EXECUTIVE DECISION-MAKING BODY OR PERSON)

Forward Plan	Expected Date of Decision	Page No.
<a href="#"><u>Early Years Specialist Language provision at Batchley First School, Redditch</u></a> Key Decision – <i>Cabinet Member Decision</i>	Week commencing 8 August 2016	5
<a href="#"><u>Formal proposal to cease delivery of a Dedicated Portage Service in Worcestershire</u></a> New Entry – Key Decision – <i>Cabinet Member Decision</i>	22 August 2016	6
<a href="#"><u>Optimising the Use of Children's Centre Buildings</u></a> Key Decision	Week commencing 5 <sup>th</sup> September	7
<a href="#"><u>Acquisition of Wildwood Office Building, Worcester</u></a> Key Decision	29 September 2016	8
<a href="#"><u>Devolution of Rail Services in the West Midlands Region</u></a> Key Decision	29 September 2016	9
<a href="#"><u>Early Years Specialist Language provision at Batchley First School, Redditch</u></a> Key Decision	29 September 2016	10
<a href="#"><u>Local Transport Plan 4 – Public Consultation</u></a>	29 September 2016	11
<a href="#"><u>Resources Report</u></a> Potentially Key Decision	29 September 2016	12
<a href="#"><u>Worcestershire Local Aggregates Assessment</u></a> Key Decision	29 September 2016	13
<a href="#"><u>Equality in Schools – notice of motion from Council 14 July 2016</u></a> Non - Key Decision	29 September 2016	14
<a href="#"><u>Winter Service Policy</u></a> New Entry – Key Decision	13 October 2016	15
<a href="#"><u>Corporate Plan</u></a>	13 October 2016	16
<a href="#"><u>Future Fit 2020 progress and proposals for 2017-2020</u></a> Non-Key Decision	13 October 2016	17
<a href="#"><u>Council Policy on responding to change of Age Range Requests from Maintained Schools</u></a> Key Decision	13 October 2016	18
<a href="#"><u>Changing the Hosting Arrangements for the Shared Museum Service</u></a> Potentially Key Decision	17 November 2016	19
<a href="#"><u>Balanced Scorecard and Corporate Risk Update – Quarter 2 2016/17 Performance Report</u></a> New Entry	15 December 2016	20

<u>'Called In' Decisions or Scrutiny Reports</u> Potentially Key Decision	Within the plan period	21
<u>Notices of Motion</u> Potentially Key Decision	Within the plan period	22